

# Beyond the workshop

## Moderator

Charlie Ishikawa, President and Principal, Kahuina Consulting

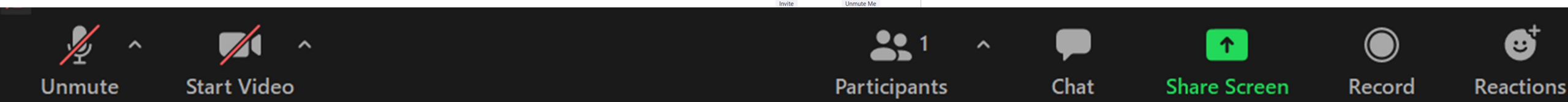
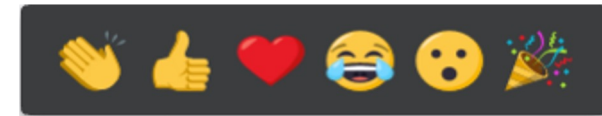
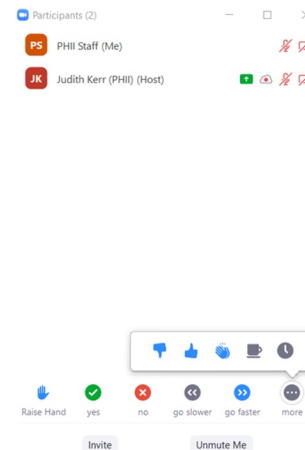
## Presenter

James Kucik, Director, Data Modernization Initiative Implementation Unit, Center for Surveillance, Epidemiology, and Laboratory Services, Centers for Disease Control and Prevention

Better data. Better decisions. Better health.

# Finding your way around Zoom

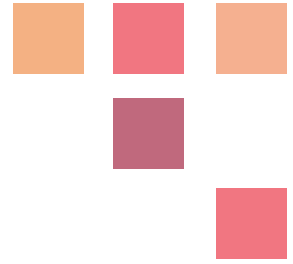
- The audience is muted, type your questions into the chat or use reactions to communicate with panelists.



# Next Speaker

## Dr. Jim Kucik

Director, Data  
Modernization  
Initiative  
Implementation Unit,  
CSELS, CDC



# Taking the Leap into Implementation

Life post-DMI Workshop

May 26, 2022

Jim Kucik, PhD, MPH  
DMI Implementation Unit  
Center for Surveillance, Epidemiology, and Laboratory Services





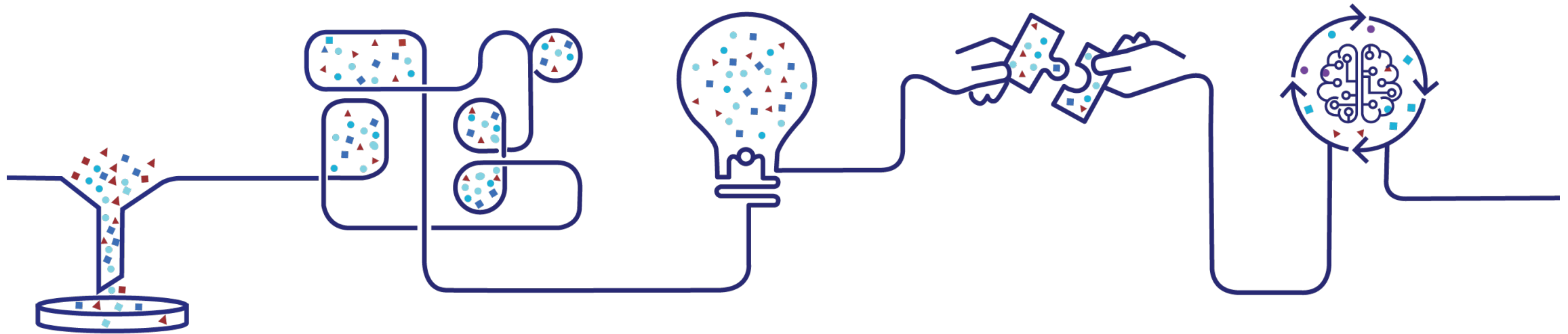
# Farewell!

**Dr. Paul Yoon**

Director, Division of Health  
Informatics and  
Surveillance



# DMI Priorities



## Build the right foundation

Decreased burden on reporters

Free up staff time to focus on prevention and control

Faster data for detecting emerging threats at all levels of public health

## Accelerate data into action

Better data integration, visualization

Robust forecasting / modeling

Response-ready platform

## Develop a state-of-the-art workforce

Identify, recruit, and retain experts to generate meaningful public health insights

## Support + extend partnerships

Better / more timely access to data within and across ecosystem

Common tools to support STLT partners

## Manage change + governance

Adaptive, agile approaches

Collaboration

Improved acquisition

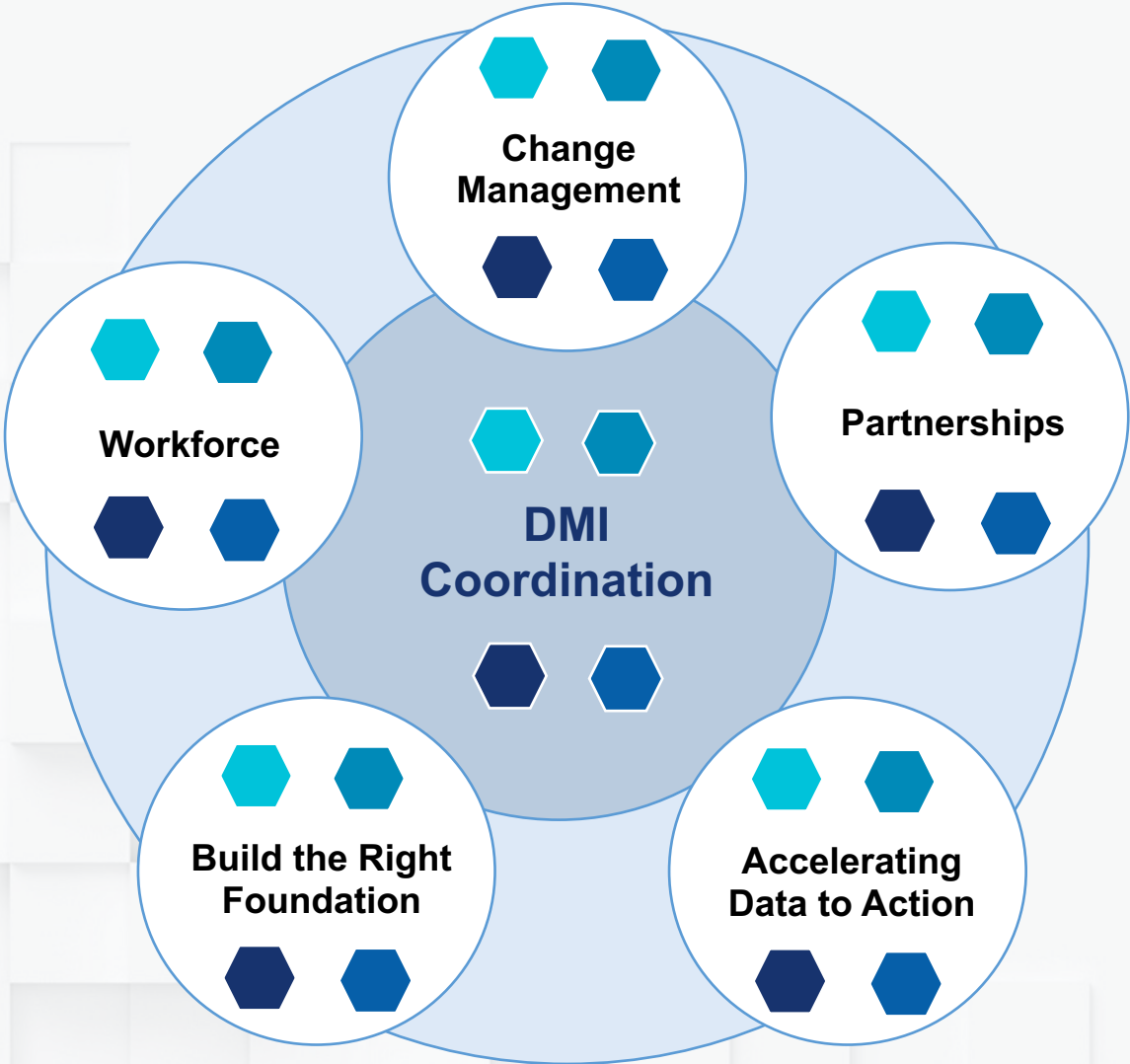
# We're changing the way we work at CDC.



## CURRENT CDC STRUCTURE



## DMI IMPLEMENTATION APPROACH





# Leadership

*really*  
*really*

# Matters

**HEALTH CARE**

## **CDC email: Let's do better with 'our data'**

Agency leadership seeks to improve how it collects and sifts through information to get at better outcomes.



Centers for Disease Control and Prevention Director Dr. Rochelle Walensky answers a question. | Greg Nash-Pool/Getty Images



# Taking the Leap Forward





# How does CDC support DMI?



**Provide funds to jurisdictions** to build foundational DMI capacities, scale up eCR, and modernize NVSS



**Offering technical assistance** that provides experts and resources to support data modernization activities.



**Collaborate with national partner organizations** to create nationwide learning networks and opportunities to develop knowledge and skills.

# Engaging in National Partnerships



DATA SCIENCE TEAM TRAINING PROGRAM



**PUBLIC HEALTH FHIR<sup>®</sup>  
IMPLEMENTATION  
COLLABORATIVE (PHFIC)**



# Challenges

We are facing a **challenging market** and finding it difficult to attract skilled workers. **Funding limitations** have impacted the ability to match national market salary requirements for professional staff.

**Staff losses** prior to and throughout the pandemic have created gaps in both staffing capacity and capabilities.

Our DMI efforts require an in-depth knowledge of **state-specific systems** and processes; our limited staff with that knowledge are overburdened and fully extended with the **COVID response**.

Prior **DMI efforts have been significantly siloed**. Historically, there has not been a balanced representation of staff that includes the business, program area, and IT point of view.

# Opportunities

With additional funding, enough time, and appropriate staffing, we look forward to **moving away from manual and towards electronic data processing.**

We are focused on **exploring FHIR server** options for data submitted outside of the health department's systems.

Working internally and with vendors to **develop and maintain ETOR capacity.** Working with key submitters to assist them with adopting ETOR for submitting specimens and receiving results.

Addressing opportunities to **improve data sent from providers** to our jurisdiction will also create improvements in the data quality sent to NSSP.

# Where do I go to engage?

Useful Links		
CDC	<a href="#">Supporting Jurisdictional Public Health Departments   DMI Support   CDC</a>	CSELS DMI Support
	<a href="#">Consortium for Data Modernization   CDC</a>	Consortium for DMI
FHIR	<a href="#">Home - PHFIC (mitre.org)</a>	Public Health FHIR Implementation Collaborative
	<a href="#">Helios   HL7 International</a>	Helios
	<a href="#">It Takes Practice: Fostering Community with FHIR   PHIO   CDC</a>	FHIR Community of Practice
APHL	<a href="#">eCR - Electronic Case Reporting (aimsplatform.org)</a>	eCR
CSTE	<a href="#">Data Science Team Training Program (DSTT) - Council of State and Territorial Epidemiologists (cste.org)</a>	Data Science Team Training
PHII	<a href="#">Data Modernization Learning Community - PHII</a>	DMI Learning Community

A light gray network diagram consisting of numerous interconnected nodes and lines, forming a complex web-like structure that spans the entire width of the slide.

# Thank you!

For more information, contact CDC  
1-800-CDC-INFO (232-4636)  
TTY: 1-888-232-6348 [www.cdc.gov](http://www.cdc.gov)



The findings and conclusions in this report are those of the authors and do not necessarily represent the official position of the Centers for Disease Control and Prevention.



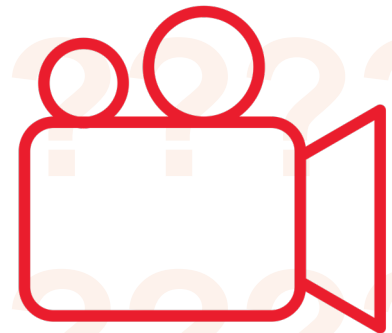
# Questions and answer



**Post in the chat**

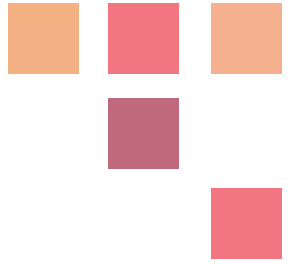


**Raise your hand**

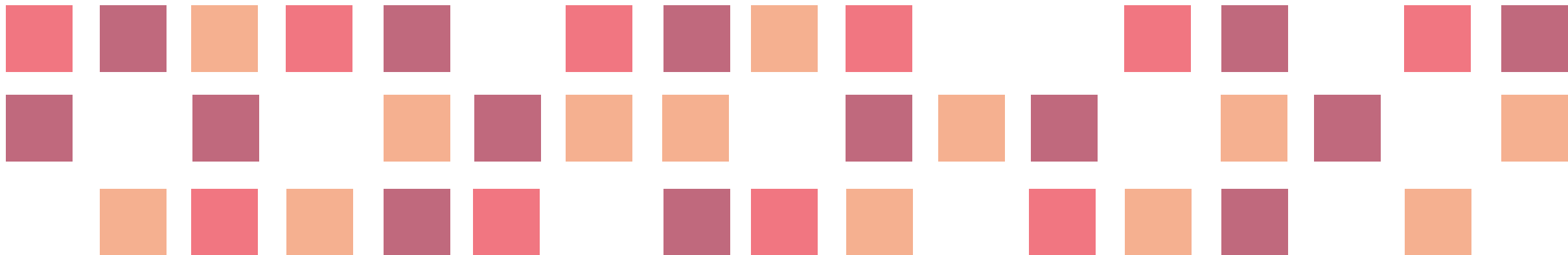


**Turn on your video**

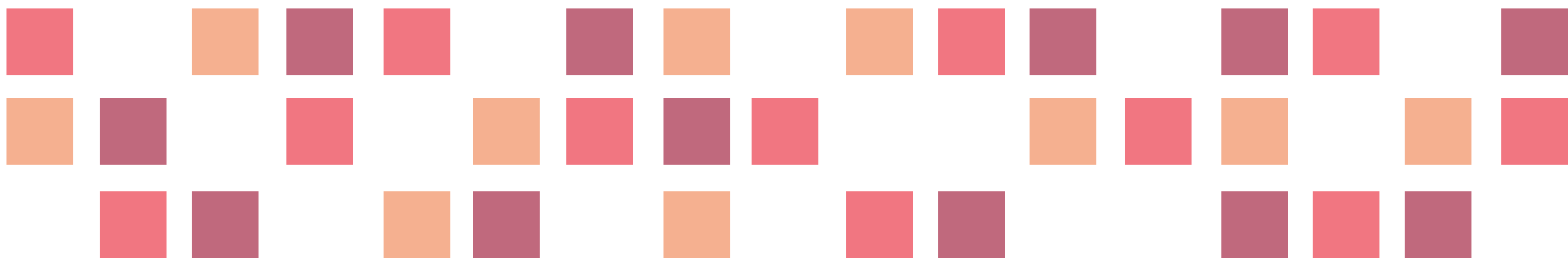
# Next Steps



- Post additional questions on Circle - link provided in the chat
- Stay here to provide feedback on the workshop and hear closing remarks from 2:50 – 3:15 PM ET



Thank you.



Better data. Better decisions. Better health.